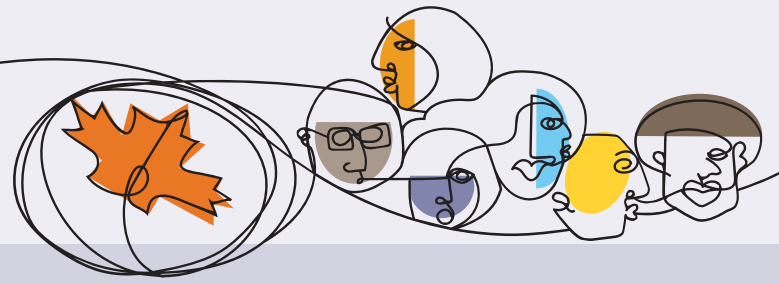


# The Many Faces of Dementia in Alberta

People living with dementia are as diverse as the different diseases and conditions that cause brain disorders.



## WHAT IS DEMENTIA?

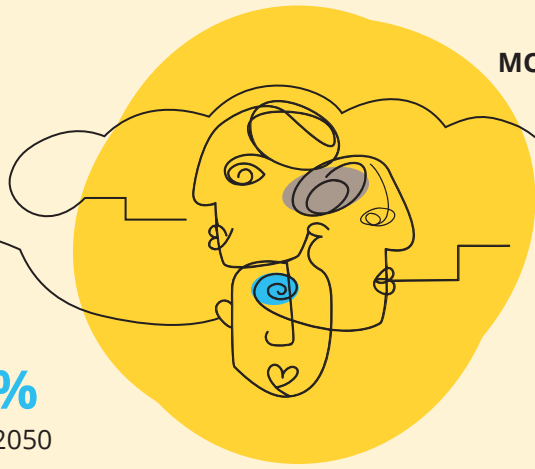
The term "dementia" doesn't actually refer to one, specific disease. Rather, it's an overall term for a set of symptoms that are caused by disorders affecting the brain.

*The Landmark Study: The Many Faces of Dementia in Alberta* is the second of three reports by the Alzheimer Society of Canada, and this series details demographic, social and economic impacts of dementia.

## DID YOU KNOW?

**MORE THAN 62,770** people are currently living with dementia in Alberta

**MORE THAN 50** different diseases or conditions can cause dementia



The number of people living with dementia in Alberta is expected to **INCREASE BY 286%** from 2020 to 2050

**MORE THAN 200,900** Albertans are likely to be living with dementia by 2050

## BY THE NUMBERS

The number of **INDIGENOUS PEOPLE** living with dementia in Alberta is predicted to surpass

**4,610** by 2050

**A 281% INCREASE**



The number of people of **ASIAN ANCESTRY** living with dementia in Alberta is predicted to surpass

**63,440** by 2050

**A 1406% INCREASE**



The number of people of **AFRICAN ANCESTRY** living with dementia in Alberta is predicted to surpass

**3,360** by 2050

**AN 829% INCREASE**



The number of people of **LATIN, CENTRAL AND SOUTH AMERICAN ANCESTRY** living with dementia in Alberta is predicted to surpass

**2,520** by 2050

**A 642% INCREASE**



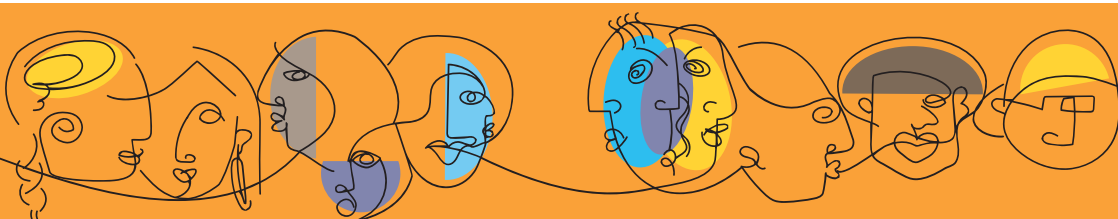
In 2024, an estimated **61.5%** of people living with dementia in Alberta were **FEMALE**



**BY 2050**, projections show that about **126,270** women will be living with dementia in Alberta

**YOUNG ONSET DEMENTIA** presents distinct challenges, which often lead to **delayed diagnoses and difficulty** in obtaining workplace accommodations

**BY 2050**, there could be **over 5,600** people **UNDER THE AGE OF 65** living with dementia in Alberta- an increase from an estimated 2,700 in 2020



The Landmark Study is a microsimulation study developed by the Alzheimer Society of Canada to better understand dementia nationally over the next 30 years. This includes projections related to Indigeneity, ethnic origin, sex (gender data was not available to be included in the model), and age in regards to dementia. There is no national tracking system for actual dementia cases, so all numbers shown rely on informed estimates and data modelling.

Read the full report, *The Many Faces of Dementia*, here: [alzheimer.ab.ca](https://alzheimer.ab.ca)



The Alzheimer Society of Alberta and Northwest Territories is the leading regional health charity for people living with Alzheimer's disease and other dementias. Active in communities right across Alberta and the Northwest Territories, the Society offers help for today through programs and services for people living with dementia and hope for tomorrow by funding research to find causes and cures. For more information, visit [alzheimer.ab.ca](https://alzheimer.ab.ca).

Illustrations by Naomi Shacter, NSG:D

© 2024 Alzheimer Society of Alberta and Northwest Territories  
Charitable registration number: 12969-0343 RR0001

Alzheimer Society

ALBERTA AND  
NORTHWEST TERRITORIES