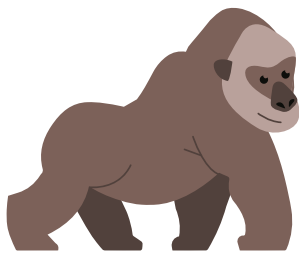
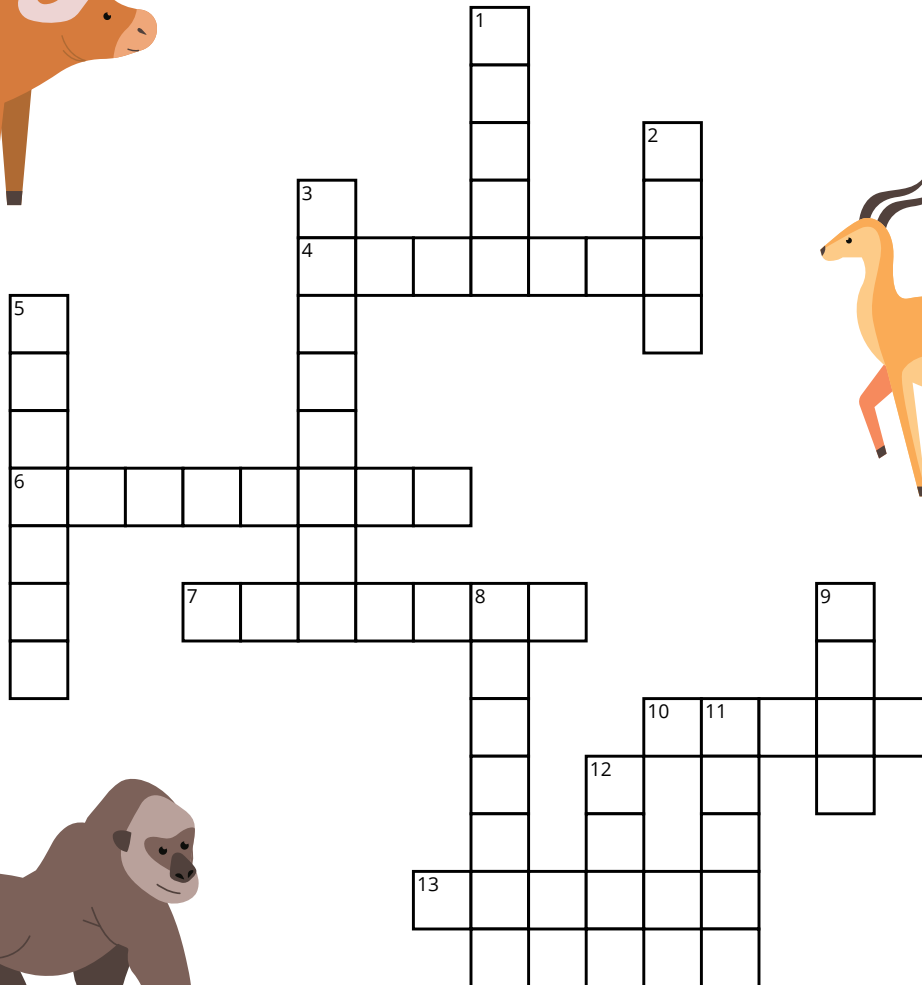
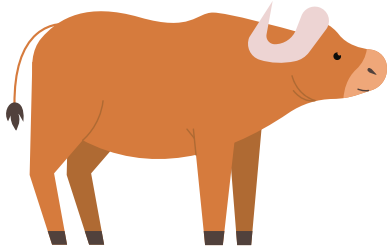
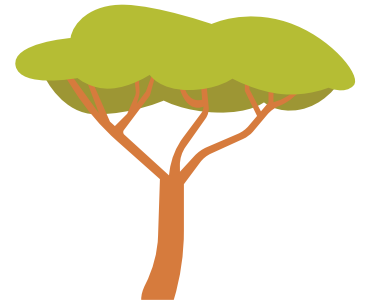


AFRICAN ANIMALS

CROSSWORD

Solve the following puzzle based on the clues given!



Across

- [4] African big cat known for its spotted coat
- [6] Small African insect eating mammal, also known as an anteater
- [7] Fast running African bird known for its distinct neck
- [10] Large mammal with two horns found in the savannas of Africa
- [13] African primate known for its brightly colored face

Down

- [1] Tree dwelling African primate known for its long tail
- [2] Large African antelope with twisted horns
- [3] Large African mammal with a long trunk
- [5] Large African herbivore with a long neck
- [8] Agile, long legged African carnivore
- [9] Small, agile African feline
- [11] Carnivorous mammal known for its distinctive spotted coat
- [12] Largest African predator and a top carnivore



Solution

