

Nutcracker and Sugar Plum Fairy Ornaments

Paint clothespins and add our provided printouts to make charming holiday ornaments.

You will need:

- [Nutcracker and Sugar Plum Fairy designs](#) printed in color on card stock
- 4 clothespins
- Acrylic craft paint (red and light pink)
- Paintbrush and painting supplies
- 2 craft or Popsicle sticks
- Two 8" strands of baker's twine
- Black marker
- Glue stick
- Hole punch
- Scissors



Display a photo of completed [Nutcracker and Sugar Plum Fairy Ornaments](#) to attract crafters to this holiday project.

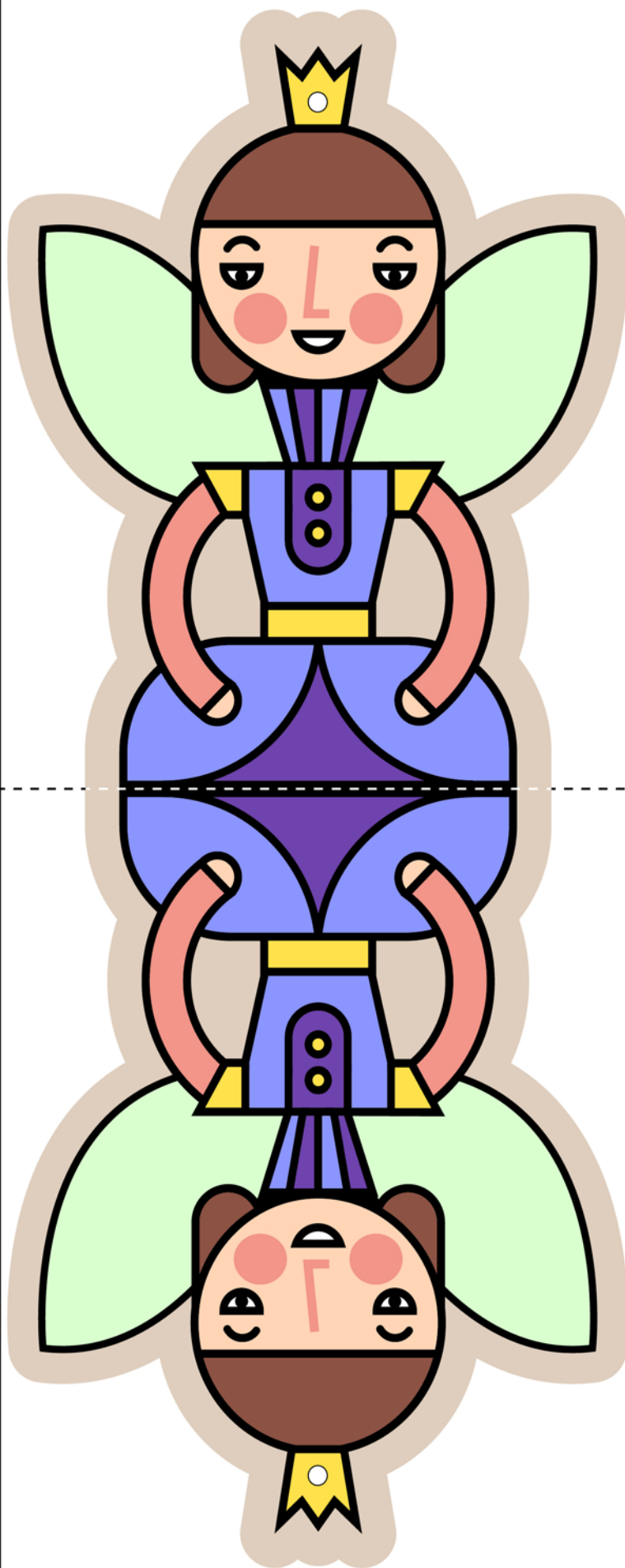
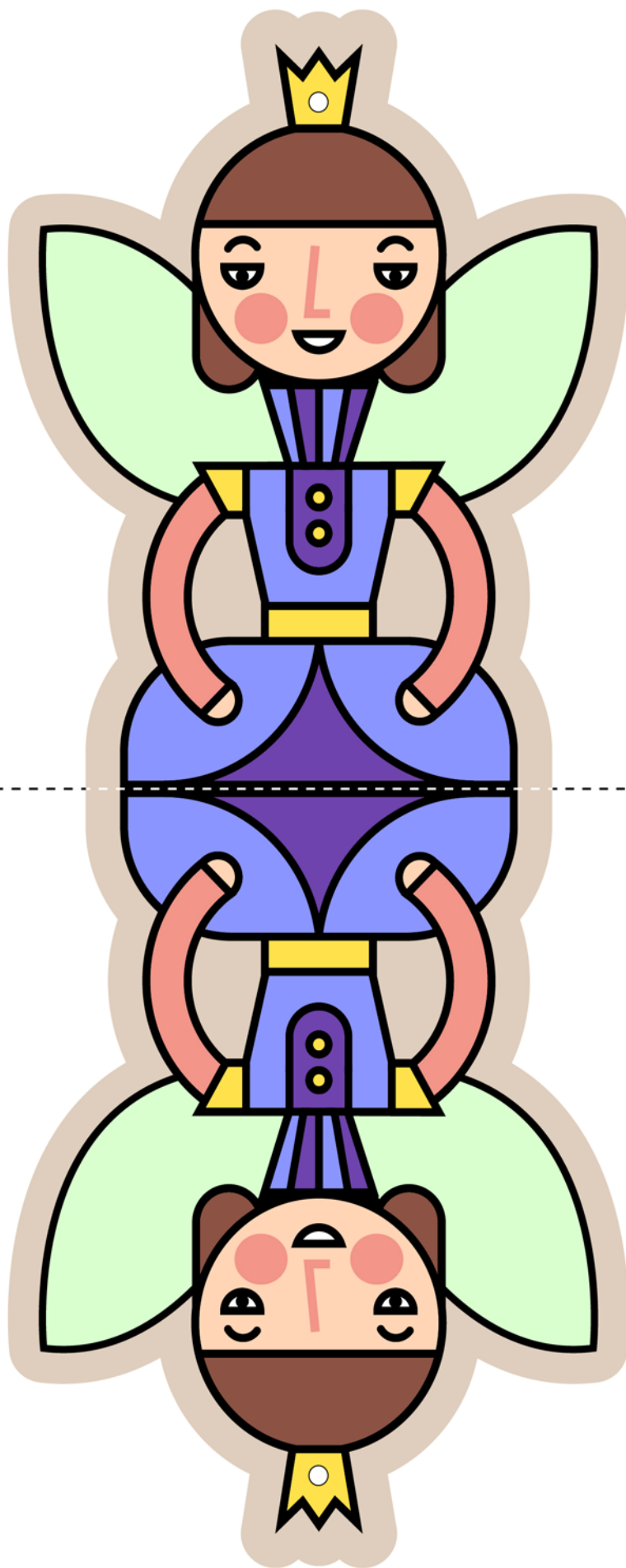
Directions:

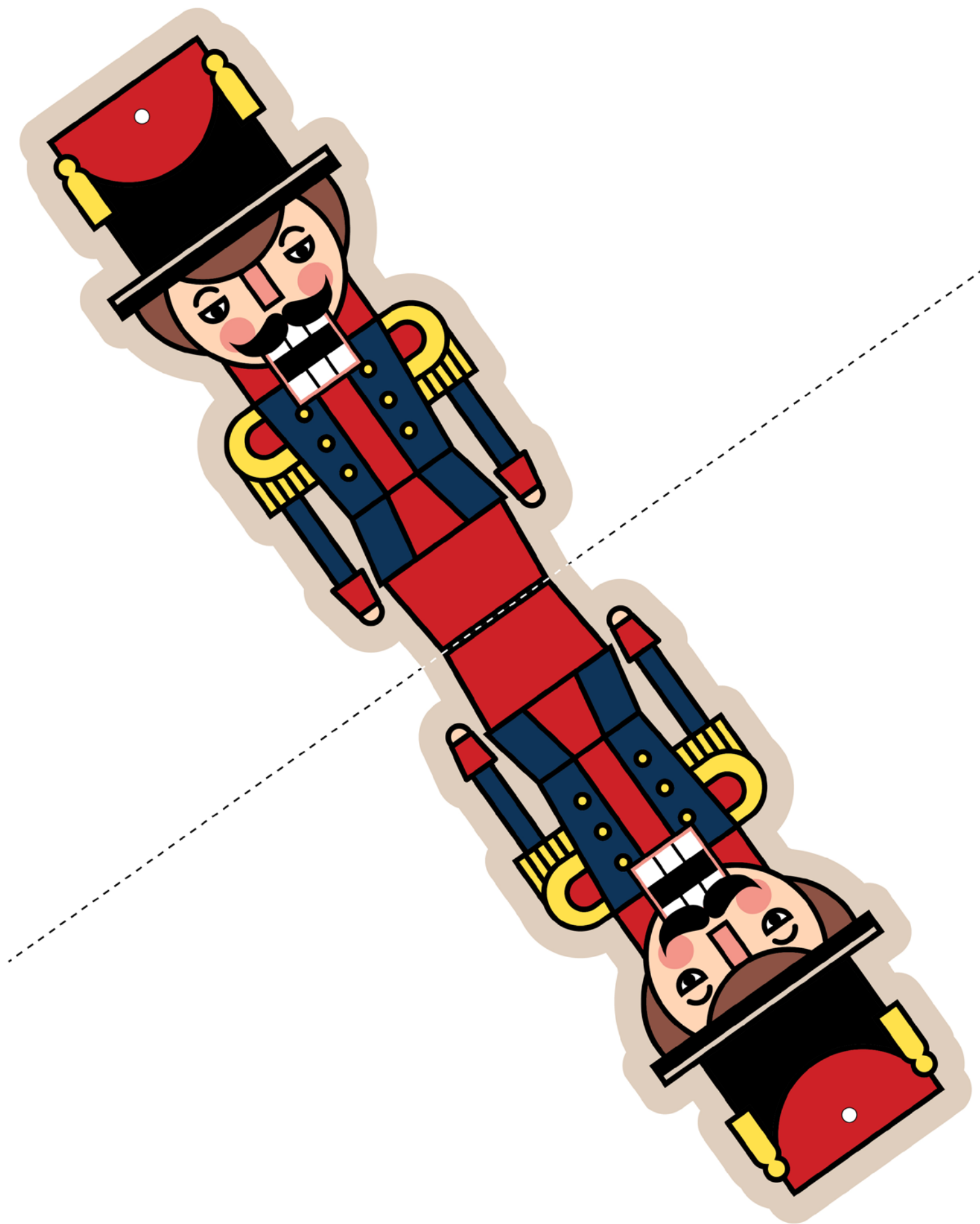
1. Paint 2 clothespins red for the nutcracker's legs and the other 2 pink for the fairy's legs. Clamp the clothespins to craft sticks and lean them over a small bowl or cup while painting them. Let the paint dry for about 15 minutes.
2. Fold the nutcracker and fairy designs in half along the dashed lines. Cut off some excess paper surrounding each design while keeping the paper folded.





3. Glue the fronts and backs of the designs together using a glue stick.
4. Cut out the designs following the thick beige border. Punch out holes where indicated. String twine through the holes for hanging the ornaments.
5. Use the black marker to draw boots on the ends (both front and back) of the red clothespins. Draw ballet slippers on the pink clothespins by adding a little black marker to the tip and then drawing 2 small X's as shown. Make sure to draw on the handle end of the clothespins.
6. Clamp the clothespin legs to the designs to complete your ornaments.







Nutcracker and Sugar Plum Fairy Ornaments