

Salon-Style Cape

Transform a towel into a salon cape that has a drawstring and decorative trim.

You will need:

- 20" X 40" towel
- 1"-wide ribbon (one 14"-long strand, two 9"-long strands)
- 36" shoelace, cut in half (color of choice)
- Needle and thread or embroidery floss
- Glue Dots (permanent tack)
- Masking tape
- Ruler
- Scissors



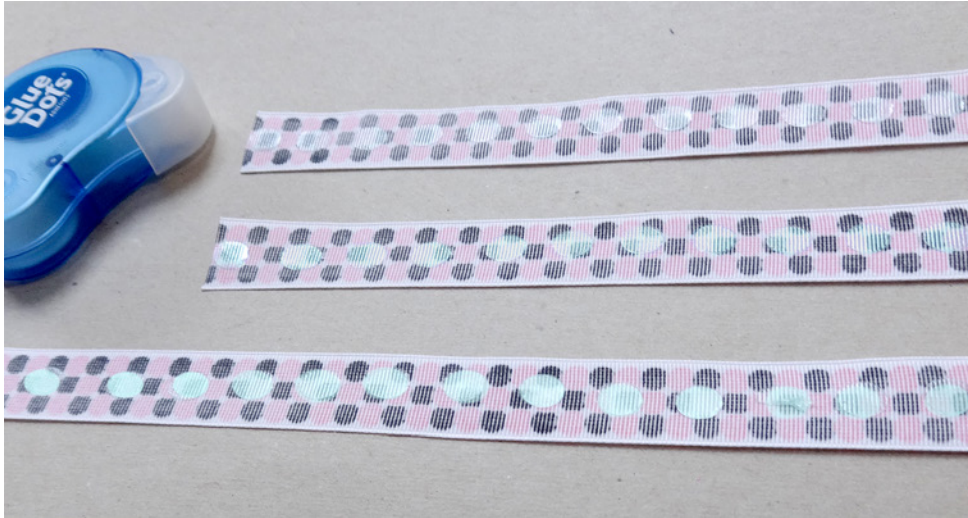
Display a photo of a completed [Salon-Style Cape](#) to attract practical crafters.

Directions:

1. Fold the towel in half widthwise. Measure 7" from both ends of the crease and mark the spots with masking tape. Unfold the towel and cut a 6" slit in the center of the towel—from one piece of masking tape to the other.
2. Measure 7" starting from the middle of the slit. Mark the spot with masking tape and then cut a slit down the length of the towel as shown. Remove the tape when you're done.



3. Turn the strips of ribbon over and apply a row of Glue Dots down the center, covering the entire length of the ribbon.



4. To add trim, fold the 14" ribbon over the edge of the neckline as shown above. The Glue Dots will hold the ribbon in place as you sew along the bottom edge of the ribbon to permanently attach it to the towel.
5. Stick the shorter ribbons along the edges of the vertical slit, folding the ribbon over as done in the previous step. Sew the ribbon edges to the towel to finish the trim and cut off any excess ribbon.



6. Sew the cut ends of the two pieces of shoelace to the corners of the neckline as shown in the last photo above. Your cape is ready to fly—we mean, dry!



Salon-Style Cape